

Frequently Asked Questions

EagleRIP4.0

2006-9-8

 **Beijing Founder Electronics Co., Ltd.**

No. 9, 5th Street, Shangdi Information Industry Base
Haidian District, Beijing 100085, People's Republic of China
Tel: +86 10 62981440 Fax: +86 10 62981440
www.founder.com.cn

Installation

Q: If I prepare to install EagleRIP, which user account should be used when I log on Windows 2003 or Windows 2000?

A: The administrator account. Otherwise, EagleRIP can not be installed to your Windows system.

Q: If I want to use EagleRIP, which account should be chosen when I log on Windows 2003 or Windows 2000?

A: The administrator account. Otherwise, EagleRIP does not work.

Q: If the preview bitmap in EagleRIP is illegible, what should I do?

A: Please set the color palette of your EagleRIP host screen to 65536(16-Bit) colors or above.

Q: Can EagleRIP run on Windows Server 2003 R2?

A: Yes.

Q: Can I use interface card of EagleRIP3.0 for EagleRIP4.0?

A: Yes, interface cards of EagleRIP4.0 are same as EagleRIP3.0 except Creo Scitex LP2000.

Q: Can I use both of EagleRIP3.0 and 4.0 on same OS?

A: Yes, you can do that except Creo Scitex LP2000 and the paths of two versions should not be same. And you need to turn off another one when you use one of them.

Q: Can I migrate the template from EagleRIP3.0 to EagleRIP4.0?

A: Yes, you can do that with the tool which is ...\"EagleRIP 4.0 path\"\\Bin\\trans30TPLtool.exe. But calibration curve needs to be saved as a file in 3.0, and then upload it into 4.0 by manual. However, we suggest user to check the parameters after the migration due to it is not completely same between 3.0 parameters and 4.0 parameters.

Q: Can you convert the Timer Dongle to a permanent Dongle?

A: Yes, when there is not more than 15 days left for the time dongle, EagleRIP will give you a message in the information window when startup and ask you to get the time key to delay the time.

Only when the left day is less than 15 days, EagleRIP 4.0 timer dongle can be reset by the time key file. Then you need a key file from Founder, and the key file name is TimeUDKEY.dat, and then Copy it without any modification into

Beijing Founder Electronics Co., Ltd.

No. 9, 5th Street, Shangdi Information Industry Base
Haidian District, Beijing 100085, People's Republic of China
Tel: +86 10 62981440 Fax: +86 10 62981440
www.founder.com.cn

\\%Eaglerip 4.0%\Bin, then restart EagleRIP. EagleRIP will convert the time dongle to a permanent dongle.

Q: Trapping is an option of EagleRIP4.0. Do I need a key and Trapping software?

A: If you want to use Trapping, there are two conditions. It is a Trapping dongle (Not EagleRIR dongle) and a Trapping option key.

Q: What kind of PCI Slot is needed by EagleRIP's interface board?

A: PCI Board needs a 32bit/33MHz (PCI2.2) PCI Slot!

Q: my EagleRIP4.0 is a demo version, why can't I set up a ctp or ctf device in it?

A: The demo version for EagleRIP 4.0 can only support TIFF and WINPRINT output, can not support any CTF or CTP output.

Q: can you send me a permanent key to change my time dongle to another type device or another device level?

A: No, the permanent key can only change the time, all the other information can not be changed after the dongle is made.

Q: Can EagleRIP4.0 run on Dual Core CPU computer?

A: EagleRIP4.0 can work on Dual Core CPU computer, but EagleRIP4.0 has not made an optimization for Dual Core CPU.

Q: When old EagleRIP4.0 is installed, how do I reinstall it?

A: You need to uninstall old EagleRIP first, during uninstallation, you need to backup the parameter by selecting the following option.

Then install new EagleRIP4.0, then after installation finished, plug in your dongle, then start EagleRIP.

Beijing Founder Electronics Co., Ltd.

No. 9, 5th Street, Shangdi Information Industry Base
Haidian District, Beijing 100085, People's Republic of China
Tel: +86 10 62981440 Fax: +86 10 62981440
www.founder.com.cn



Q: I want a Mac direct printing, may I install EagleRIP4.0 on XP Professional?

A: XP does not have AppleTalk Service, so If you want to install it on XP for AppleTalk printing, it has to be XP Professional and a 3rd party AppleTalk Service application has to be installed, for example PCMACLAN.

Both Windows 2000 Server or 2003 Server are ok for AppleTalk printing.

Input

Q: I'd like to print documents directly from Macintosh layout applications into EagleRIP via network, how to setup my EagleRIP host?

A: Services for Macintosh and AppleTalk protocol should be installed into the Windows.

Q: Can I print directly from more than one MAC at same time?

A: No, you should print directly from more than one MAC respectively.

Q: Will PC Maclan or any other utility or method allow for printing directly from Mac OS9 to an EagleRIP 4.0 installed in Windows XP?

A: Yes, but Since Windows XP does not have apple talk protocol, so you can not print directly from MAC by sharing template, you can make a NT pipe printer, then share this printer for MAC OS.

Q: Can we just rip the excel file directly?

A: EagleRIP cannot interpret Excel file directly.

Q: Why can't the files be submitted to EagleRIP4.0 by hot folder?

Beijing Founder Electronics Co., Ltd.

No. 9, 5th Street, Shangdi Information Industry Base
Haidian District, Beijing 100085, People's Republic of China
Tel: +86 10 62981440 Fax: +86 10 62981440
www.founder.com.cn

A: Please check the property of the files. If the property is read-only, please disable it.

Q: When I copy the PS file without extension into hot folder, can the PS file be submitted to queue?

A: Yes. PS, PDF, EPS and TIFF files can be submitted to queue without extension.

Q: When I want to open a file, the EAGLE Open window pops, but it takes long before it displays the directories, what happens?

A: If there are too many files on where the Open windows accesses, perhaps it takes long time to display.

Fonts

Q: What is the Founder(R) Downloader?

A: Founder(R) Downloader could be used as a tool to download the PostScript fonts from Macintosh to EagleRIP through the Ethernet. You can download this tool from Founder website.

Q: When Founder(R) Downloader is downloading PostScript fonts into EagleRIP, could I submit another PostScript job into EagleRIP exactly at the same time?

A: No, you couldn't. Otherwise, the process of downloading PostScript fonts will be canceled.

Q: We would like to maintain a complete and identical installed fonts list on each machine. Could you please instruct?

A: You can output the registered fonts list from an EagleRIP4.0 according to following steps.

- Click Fonts from menu and select Browse Fonts.
- Click Output button from Browse Fonts window after you select a template for output.

Q: If ID of dongle is same, is it possible to use font files in V8 to 4.0?

A: Yes, for the upgrade, the fonts installation is easy, since the dongle ID is the same, you can just copy the fonts files installed in V8 into 4.0, then reset fonts, it's ok.

Beijing Founder Electronics Co., Ltd.

No. 9, 5th Street, Shangdi Information Industry Base
Haidian District, Beijing 100085, People's Republic of China
Tel: +86 10 62981440 Fax: +86 10 62981440
www.founder.com.cn

Screen

Q: We want to use the Founder FM screen with resolution 3000, but we do not know the number for the cell size.

A: Usually the cell size is up to the press requirement; you can just set it for 20um for most cases.

Q: Can I output an accurate custom screen angle and frequency?

A: Accurate custom screen angle and frequency was not supported in normal EagleRIP4.0. However, it is possible to tell us your detailed request and get a special version to do that, and it should be tested by user.

Q: EagleRIP 4 in DEMO Mode does not accept a higher resolution than 1270DPI for TIFF output-device, what can I do?

A: On 4.0 demo version, the highest resolution is limited at 1200DPI, so you cannot select 1270DPI. You have to get a normal version if you want to use 1270DPI.

Color

Q: I would like to send composite jobs and output the spot colors separately, how can I do that?

A: We suggest you to enable spot color in CMYK mode.

Q: Can you tell me more in understandable way about the relation between "Calibration Curve", "Intended Press Curve", "Actual Press Curve" in RIP setting of EagleRIP4.0?

A: Calibration Curve is a calibration for imagesetter or CTP, and it is a same function in EagleRIP3.0.

"Intended Press Curve", "Actual Press Curve" are for Press Dot Gain. It is a new function in EagleRIP4.0. You know, usually the CMYK image which is embedded in layout application has been handled by an intended dot gain during the operator made it from Scanner. I mean the intended dot gain is a dot gain description for intended press machine. But if the actual press is not the intended press, the color is not accurate without a color correction function in RIP or Workflow. So both of EagleRIP4.0 and ElecRoc4.0 provide a "Intended Press Curve", "Actual Press Curve" function to correct the color deviation caused by the difference between intended press dot gain and actual press dot gain.

Beijing Founder Electronics Co., Ltd.

No. 9, 5th Street, Shangdi Information Industry Base
Haidian District, Beijing 100085, People's Republic of China
Tel: +86 10 62981440 Fax: +86 10 62981440
www.founder.com.cn

Q: The actual angle of every separation is not same the angle parameter of the selected template while I click “Test” for output test strip in Calibration Tool. How can I get right angle?

A: Please disable the “Override angle in job” in the template, and then click “Test” in Calibration Tool.

Q: Why can't I find out the calibration curve in “calibration curve list” of template, but the curve has been made in “Curve Manager” before?

A: Please check if the Resolution, Color Mode, Exposure Value and Negative are same between the template and Curve.

Q: Why can't I select a template in “Calibration Test” window after I click “Test” button in Curve Manager?

A: Your Resolution, Color Mode, Exposure Value and Negative of calibration curve must be same as your template otherwise template is not appeared in template list of “Calibration Test” window.

Q: Would you tell me the Procedure & Steps of Calibration of AGS screen in Eagle Rip?

➤ A: please refer to attached AGScalibration_RIP4.0.pdf.

Ripping

Q: Which image format should I save as in PhotoShop to print successfully in EagleRIP?

A: In layout applications we recommend using TIFF, EPS (without JPEG) and DCS file formats. We also recommend using CMYK, GRAY, BITMAP and Duotone image modes.

If you use other image formats and modes, you may have problems, for example, when you place an RGB image or CMYK EPS with JPEG encoding in QuarkXpress and print it in "Separations" mode, there may be no image in the Cyan, Magenta and Yellow plates.

Q: I outputted Microsoft Word files using EagleRIP, and I got a black and white image instead of the original color image?

A: For Word color files, please choose a color PostScript printer driver to generate PS files, otherwise the color image or color graphics may be only on the Black plate; or install Adobe PS driver and choose the PPD file created by EagleRIP. You can download the driver from Adobe website.

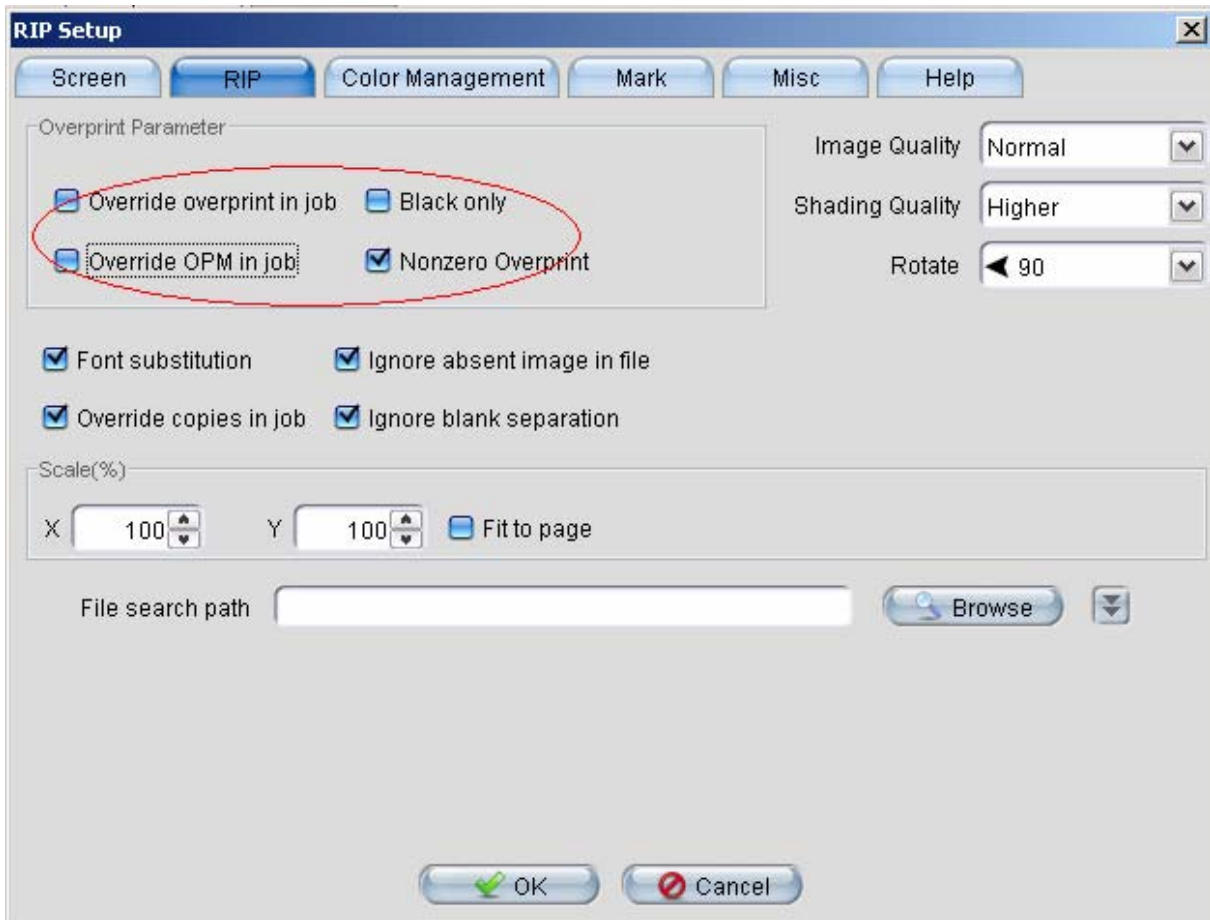
Q: How can I make Altona Test?

Beijing Founder Electronics Co., Ltd.

No. 9, 5th Street, Shangdi Information Industry Base
Haidian District, Beijing 100085, People's Republic of China
Tel: +86 10 62981440 Fax: +86 10 62981440
www.founder.com.cn

A: If you want to test Altona, you need to config the EagleRIP4.0 template as below.

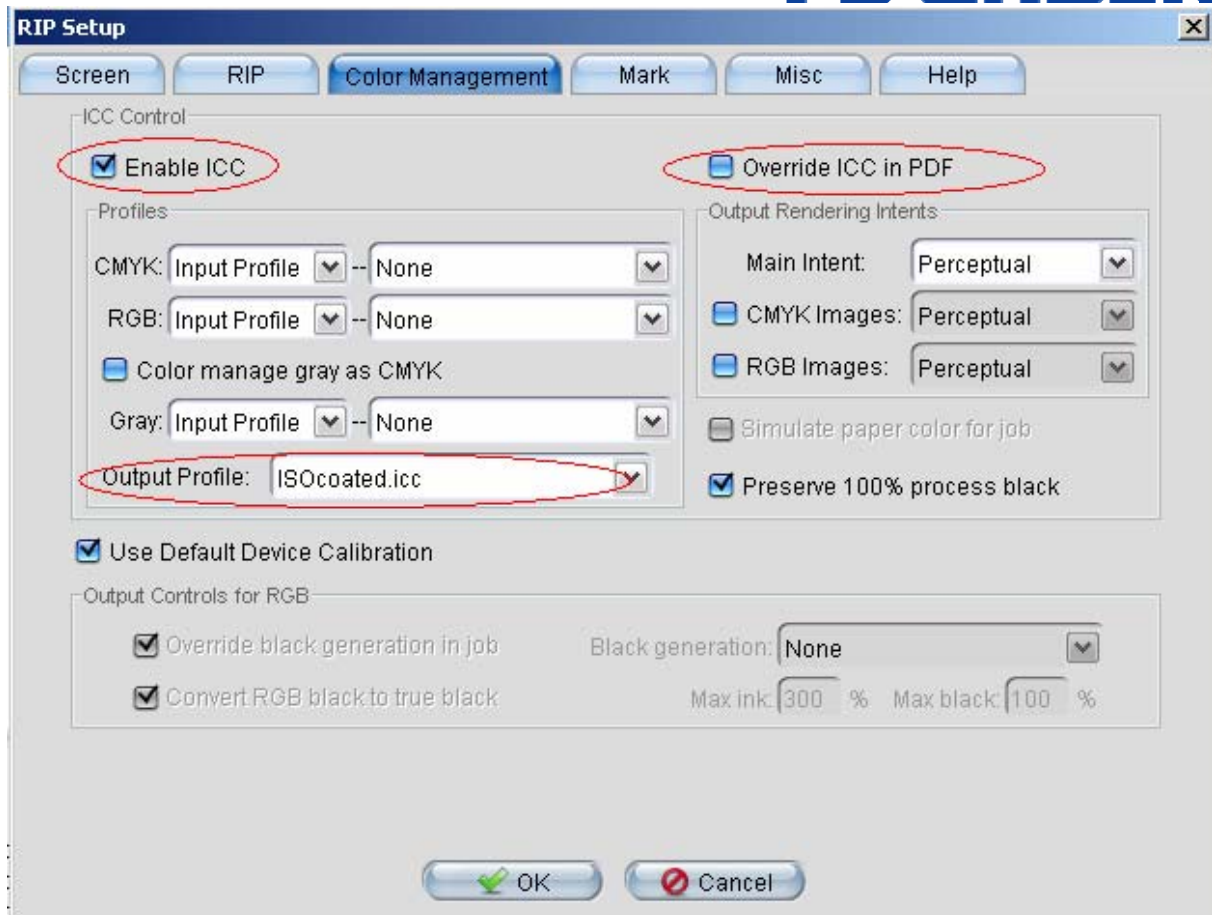
Set up Overprint parameters.



Set up ICC parameters.

Beijing Founder Electronics Co., Ltd.

No. 9, 5th Street, Shangdi Information Industry Base
Haidian District, Beijing 100085, People's Republic of China
Tel: +86 10 62981440 Fax: +86 10 62981440
www.founder.com.cn



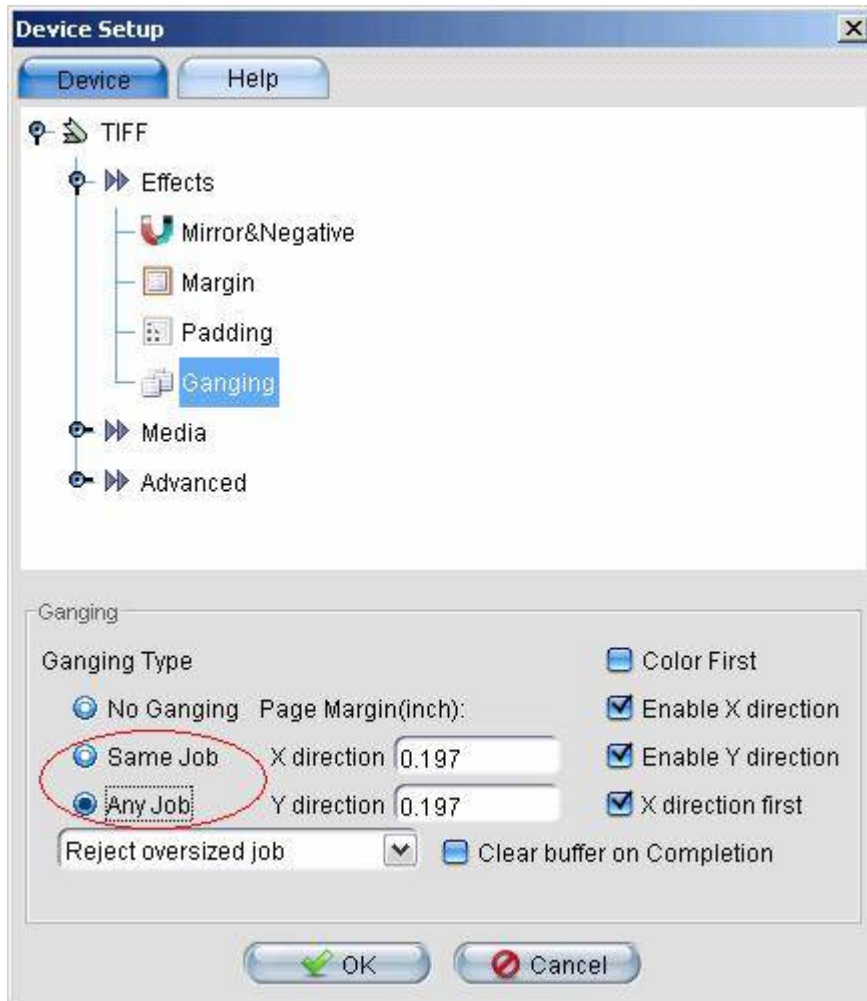
Ganging

Q: I can not do manual ganging as explained in the use guide . Can you explain more clearly ?

First, you need to set "Any job" or "Same job" in the template setting as shown below:

Beijing Founder Electronics Co., Ltd.

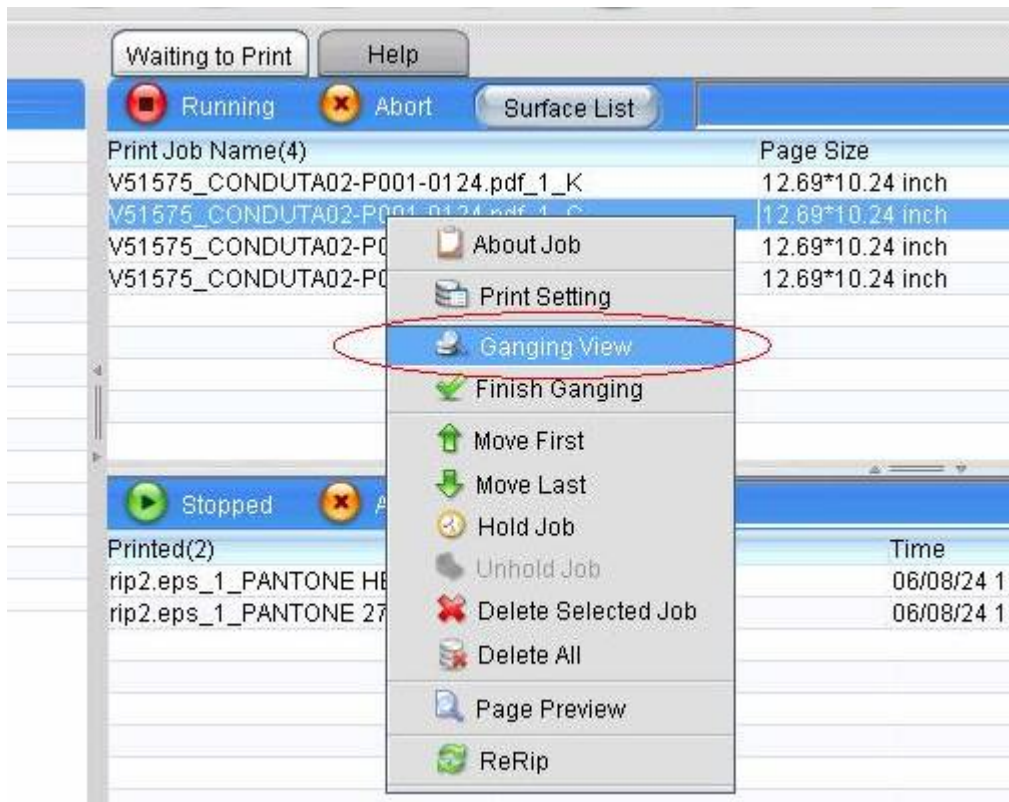
No. 9, 5th Street, Shangdi Information Industry Base
Haidian District, Beijing 100085, People's Republic of China
Tel: +86 10 62981440 Fax: +86 10 62981440
www.founder.com.cn



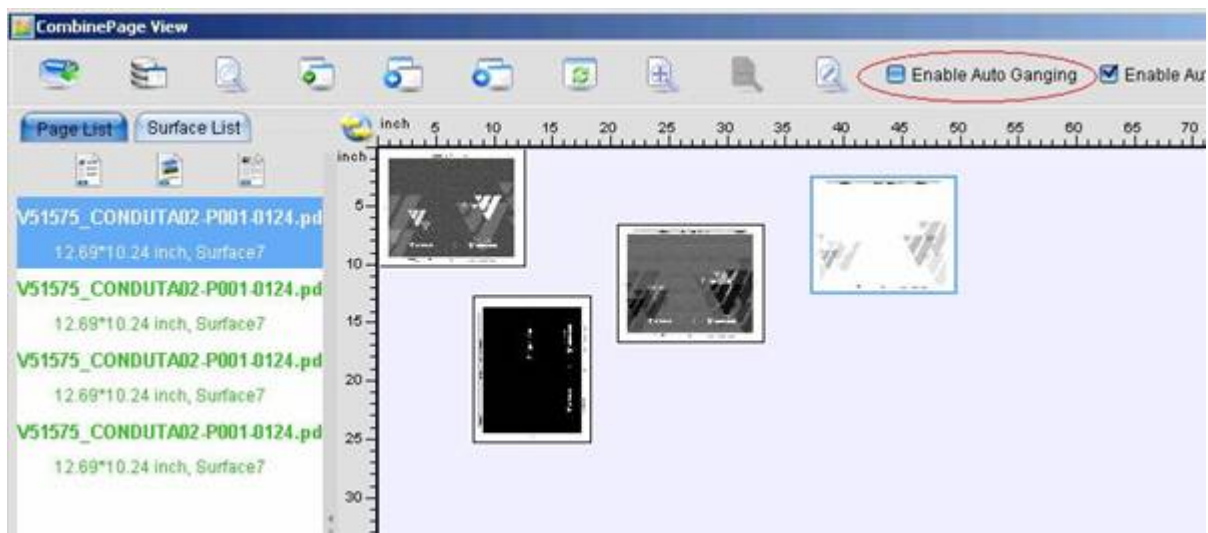
Then rip your file, after the file is ripped, right click your mouse button to select Ganging View.

Beijing Founder Electronics Co., Ltd.

No. 9, 5th Street, Shangdi Information Industry Base
Haidian District, Beijing 100085, People's Republic of China
Tel: +86 10 62981440 Fax: +86 10 62981440
www.founder.com.cn



In the ganging view, uncheck “Enable Auto Ganging”, then you can use your right mouse button to do the manual ganging.



Beijing Founder Electronics Co., Ltd.

No. 9, 5th Street, Shangdi Information Industry Base
Haidian District, Beijing 100085, People's Republic of China
Tel: +86 10 62981440 Fax: +86 10 62981440
www.founder.com.cn

Output

Q: What kind of compress format for 1-bit-tif can be supported in EagleRIP?

A: 1-bit-tif with No, LZW, PACKBITS and G4 formats can be supported in EagleRIP.

Q: What kind of compress format for 8-bit-tif can be supported by EagleRIP?

A: 8-bit-tif with No, LZW and PACKBITS compress formats can be supported by EagleRIP.

Q: Can I connect more than one recorder with a RIP?

A: No, EagleRIP does not support to connect more than one device.

Q: Can I use the driver which is copied from the EagleRIP3.0?

A: You cannot do that.

Q: Can Eagle Rip v4.0 support Panther Imagesetter?

A: EagleRIP 4.0 can not support Panther directly, but you can output 1-bit tiff by EagleRIP 4.0, then send the 1-bit tiff to the tiff downloader of Panther, or send 1-bit tiff to their old RIP if they have.

Q: I made a Template and selected a resolution of 1270dpi (which is half the maximum resolution the ECRM VR45 is capable of producing), as the customer requires to output just text and needs speed as opposed to quality, but all the files imaged at 50% of the original size. What can I do?

A: Please check if you selected local mode to output. If you select 1270dpi in EagleRIP, but 2540dpi in VR45, there will be no error reported, but the image will be exposed 50% of the original size, so if you select local mode, please check if the resolution setting is the same on EagleRIP and VR45. Or you can try to select serial mode, by the serial mode, the resolution you selected in EagleRIP will be transferred to VR 45 automatically.

Q: SIGNASSETTER PRO. I know there is the possibility to set those values within device setup; FOCUS, FILTER, THRESHOLD, LIGHT. But does it work?

A: It does not work, and all Speedway imagesetters are same. Operator has to set up the parameters on imagesetter control panel.

Others

Q: When we are previewing a ripped file, can we rotate the image on the monitor?

Beijing Founder Electronics Co., Ltd.

No. 9, 5th Street, Shangdi Information Industry Base
Haidian District, Beijing 100085, People's Republic of China
Tel: +86 10 62981440 Fax: +86 10 62981440
www.founder.com.cn

A: Yes, you can do it by rotate button in Preview window.

Q: In EangleRIP4.0, we can move the waiting files to top or bottom of queue by using MOVE First and MOVE LAST. If there are 10 files in the waiting queue, can we only move the file for one level?

A: You can do it by pressing “Alt” key & Mouse.

Q: How do I use the custom mark with separate and composite PS?

A: If you output separate PS file, you can add custom mark which is Gray Mode, but custom mark which is Color Mode can not be supported. If you output composite PS file, the custom mark which is Gray Mode will only be added on K plate; the custom mark which is Color Mode can be added on every plate, but custom mark can not be added on spot color plate.

Q: Why is the result of Mark's lines not same width?

A: Your resolution of RIP template must be low, so there is not accurate.

Q: Why is the result of the gap of ganging pages and margin value not same width?

A: Your resolution of RIP template must be low, so there is not accurate.

Please use Acrobat 7.0 or above to read this document.

Beijing Founder Electronics Co., Ltd.

No. 9, 5th Street, Shangdi Information Industry Base
Haidian District, Beijing 100085, People's Republic of China
Tel: +86 10 62981440 Fax: +86 10 62981440
www.founder.com.cn